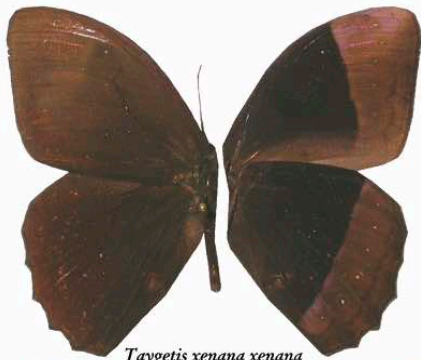


# Mariposas en un cultivo de café de dos hectáreas en la selva de la danta de la Sierra Nevada de Santa Marta





*Taygetis xenana xenana*



*Paraeuptychia metaleuca*



*Euptychia weswoodi*



*Cissia confusa confusa*



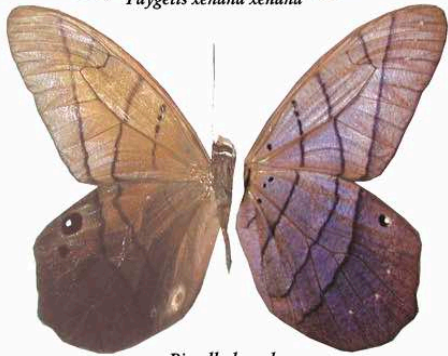
*Pareuptychia ocirrhoe*



*Cissia pompilia*



*Magneuptychia libye*



*Pierella luna luna*



*Herrmeuptychia bermes bermes*



*Chloreuptychia arnaca*



*Pharneuptychia sp*



*Opsiphanes tamarindi ssp*



*Opsiphanes quiteria ssp*



*Mechanitis polynnia bolivarensis*



*Mechanitis lanei*



*Mechanitis doryssus caribensis*



*Mechanitis utemaia utemaia*



*Napeogenes stella ssp*



*Hypothyria euclea caldasensis*



*Itbomia cleora ssp*



*Itbomia lagussa ssp*



*Oleria modesta ssp*



*Oleria padilla*



*Dircenna dero*



*Godyris kedema ssp*



*Dircenna jemina ssp*



*Hypoleria ocaela ocaela*



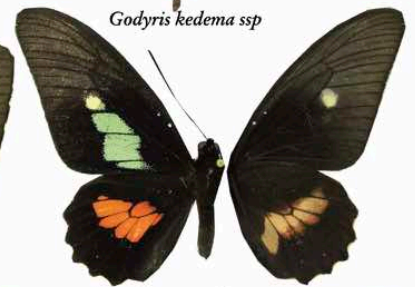
*Pseudoscada timna timna*



*Eurema albula marginella*



*Parides eritbalion eritbalion*



*Parides eurimedes eurimedes*



*Pterourus zagreus zagreus*



*Apaustus menes*



*Parides anchises serapis*



*Calpodus etbilus*



*Hesperidae sp*



*Hesperidae sp*



*Narcosius samson*



*Hesperidae sp*



*Niconiades sp*



*Hesperidae sp*



*Celmia celmus*



*Panthiades bitias*



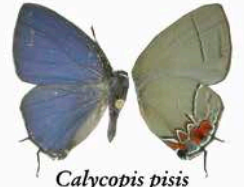
*Symbiopsis tanais*



*Tmolus ecbion*



*Strymon ziba*



*Calycopis pisis*



*Calycopis trebula*



*Calycopis indigo*



*Calycopis isobaeon*



*Theritas mavors*



*Leucochimona lagora*



*Leucochimona iphias*



*Perophtalma tullius*



*Detritivora bermadora*



*Euribia lycisca*



*Calephelis laverna*



*Synargis calyce*



*Nymphidium ascolia*



*Nymphidium onaeum ssp*



*Theope eupolis*